

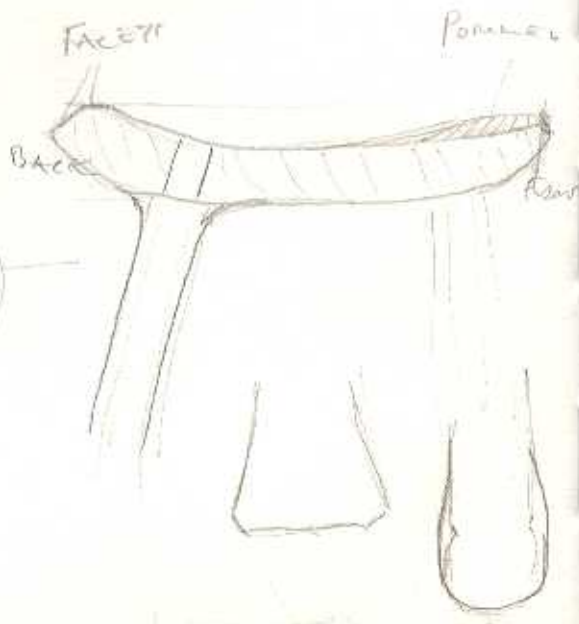
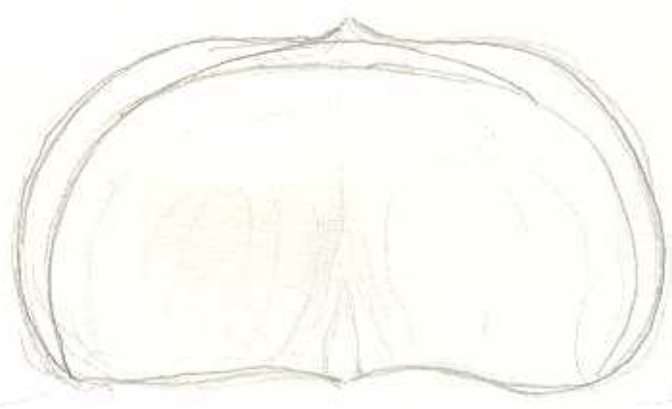
FRONT EDGE
LOWER THAN
MAIN SECTION
OF STAIN
EDGE
MERGES
FOR COMFORT

BOTTOM RELIEVED
TO HELP LEG TO
MERGE WITH TOP

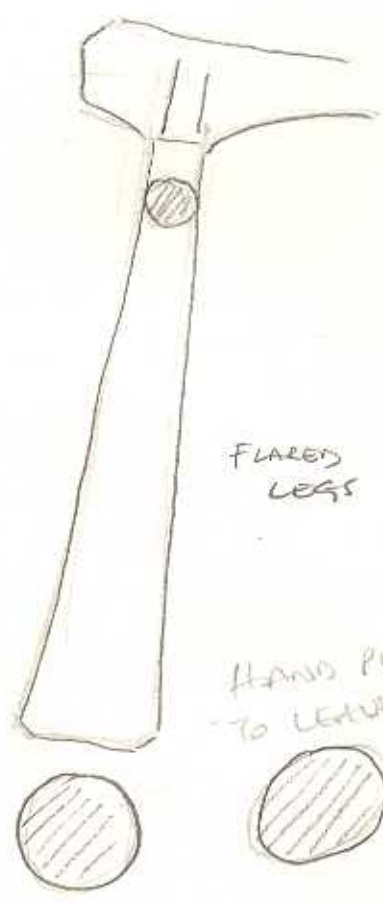
OR



FORMING NECK TO TOP
OF STAIN LEG.
EASIER TO FIT BUT
NOT VISUALLY RIGHT

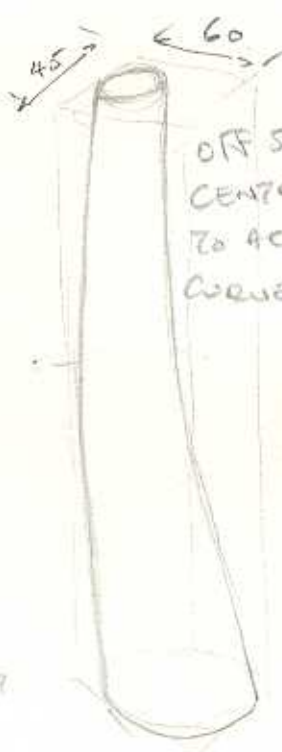


CONTOURS OF SEAT
RELATIVE TO OPERATING CURVES
OF TRANSDUCER

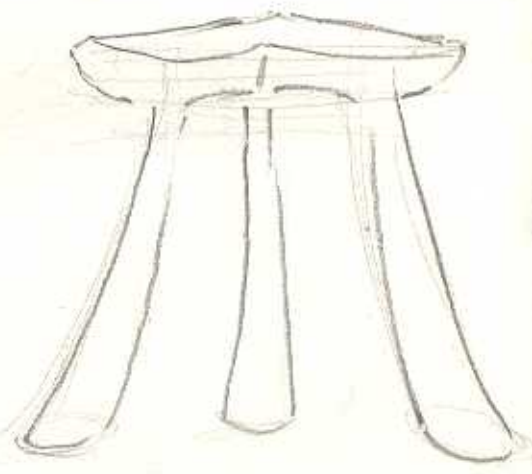


FLARED
LEGS

HAND PLANE
TO LEAVE SLIGHT
EDGES



OFF SET
CENTRES
TO ACCENTUATE
CURVE + FLARE



CURVED FLARED LEGS
GIVE / CONTINUE ORGANIC FEEL